



FH Burgenland

UNIVERSITY OF APPLIED SCIENCES

e.nova
INTERNATIONAL CONFERENCE

BRINGT BESONDERES ZUSAMMEN

NEEDS ASSESSMENT FOR ACTIVE ASSISTED LIVING CONCEPTS AMONG THE ELDERLY

23. November 2018

Mut Michael, BA
Alexandra Weghofer, BA

Agenda



Health and social care needs of the elderly

Determinants of needs

Characteristics of the Austrian care system

Needs assessment

AAL-Welten-Modell

Health and social care needs of the elderly

„Need“= desire to significantly improve the current situation or to correct a deficiency

Needs of older people differ from those of other age groups, needs such as housing.

Health and social care needs are highly influenced by:

- 1) Political / Economic developments
- 2) Societal developments
- 3) Demographic developments

Societal development

- Increasing number of older people living alone
- Greater desire of autonomy
- Higher awareness of a better and healthy lifestyle
- Increased mobility

Political / Economic development

- Greater expectations of the quality of healthcare system
- Financial resource constraints
- Shortage of skilled labour
- Oversupply

The population of Austria vs. Burgenland by demographic characteristics

Great east-west-differences in Austria as well as north-south-differences in Burgenland → no fundamental explanations for that!

The Region South Burgenland has:

- On of the lowest life expectancies in Austria
- Highest mortality rate (due to cardiovascular diseases)
- One of the lowest birth rates

West-east-differences

North-south-differences



■ Below 15 years ■ 15 to below 60 ■ 60 and above

Life expectancy at birth: Vorarlberg

Male 79,3 years

Female 83,9 years

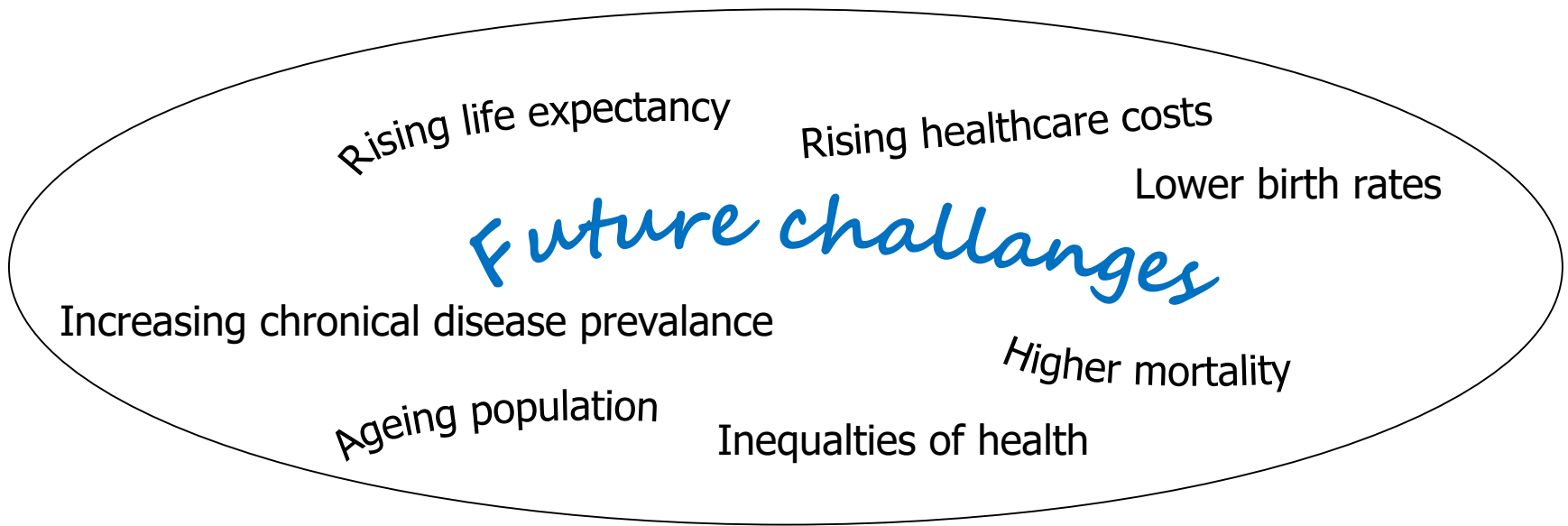
Mortality: 9,47 deaths per

Birth rate: 9,96 live births per 1.000 persons

Fertility: 1,52 average number of children per woman

Demographic Forecast & Future Challenges

- Total population of Austria will increase to 9.43 million people (+9%) until 2030.
- Elderly population in Austria will grow 18.6% (2017) → 28.1% (2060)



Basic characteristics of the Austrian care system

1. Informal care

2. Formal care

- Institutional (inpatient) care
- Home-based care (mobile services)
- Semi-institutional care

Technical solutions could bring significant reliefs here - for those who are affected, but also for the health and social care system.

457

Thousand people will receive federal long-term care allowance at the moment

750

Thousand people will receive federal long-term care allowance until 2050 (according to Wifo expectations)

A large variety of challenges in elderly care!

Need-oriented Active and Assisted Living technologies have the potential to:

- Improve ability to self-manage their health + wellbeing, safety as well as the social participation
- Alert health professionals to changes in the patient's condition and support medication and care adherence
- Support health and social care providers to deliver safer, more efficient and cost-effective care
- Increase the efficiency and productivity of used resources in the ageing societies

Active & Assisted Living (AAL)

- Wide range of different AAL technologies, services & concepts
 - Problem: Often no connection to the needs of end-users
-
- Not only the right technology is required, also infos about the life situation and needs of the target group(s) to **put human centre stage**

„Patients / clients are the most underused resource“
Warner Slack

Focus on the needs of the elderly and hear the voice of the older people
→ But what are the needs of the elderly and how can we assess the needs?

Our approach: AAL-Welten-Modell



Needs assessment at a glance

Needs assessment (NA):

Systematic method for reviewing the health and social needs + capacity facing a population

The NA helps all people / parties involved to obtain a general sense of the level of (technical) assistance required

NA is carried out in the framework of two research projects of the FHB:

→ Interreg SI-AT Project “COOP4HEALTHCARE”



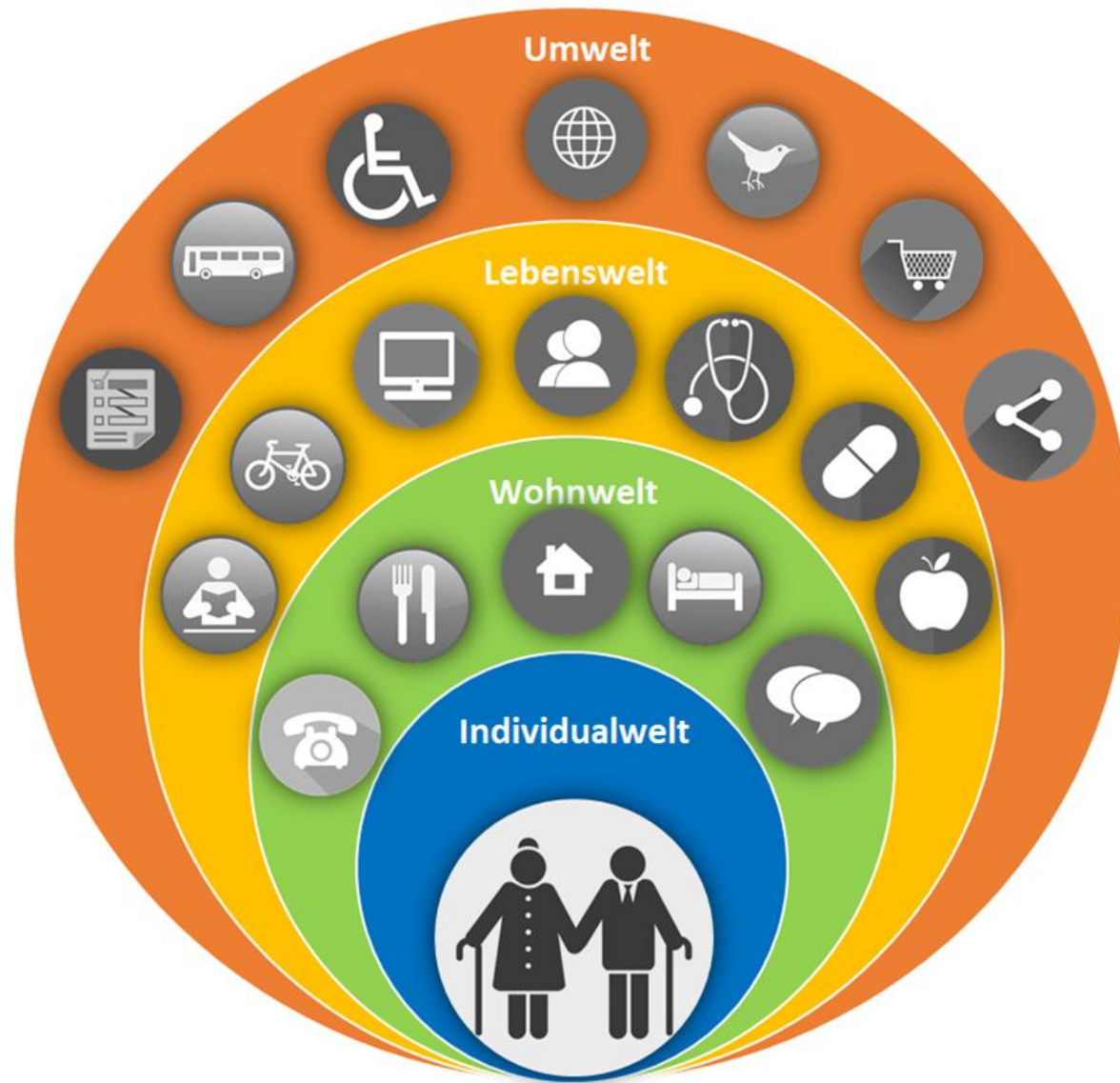
→ Interreg Central Europe Project “digitalLIFE4CE”



Summary: Needs assessment

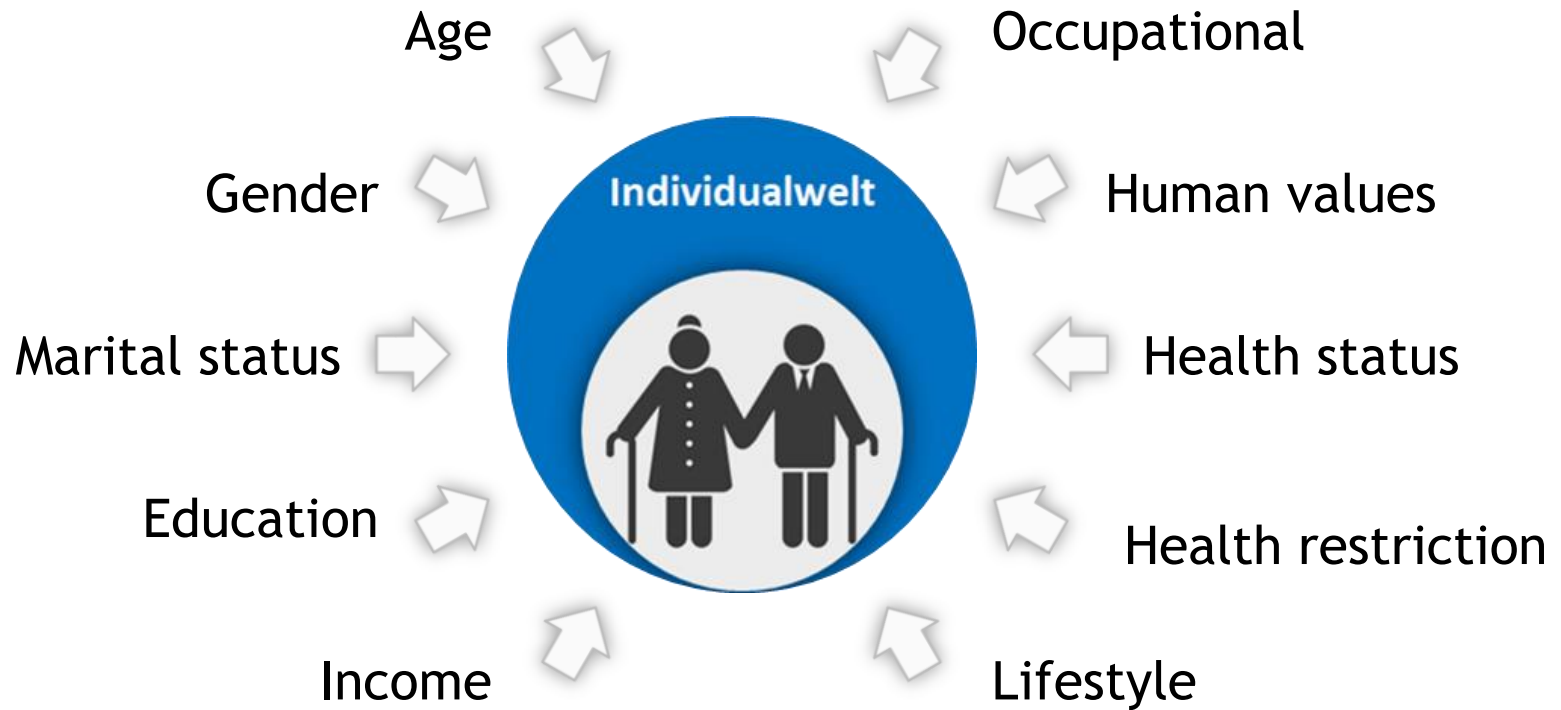


Spotlight on: „AAL-Welten-Modell



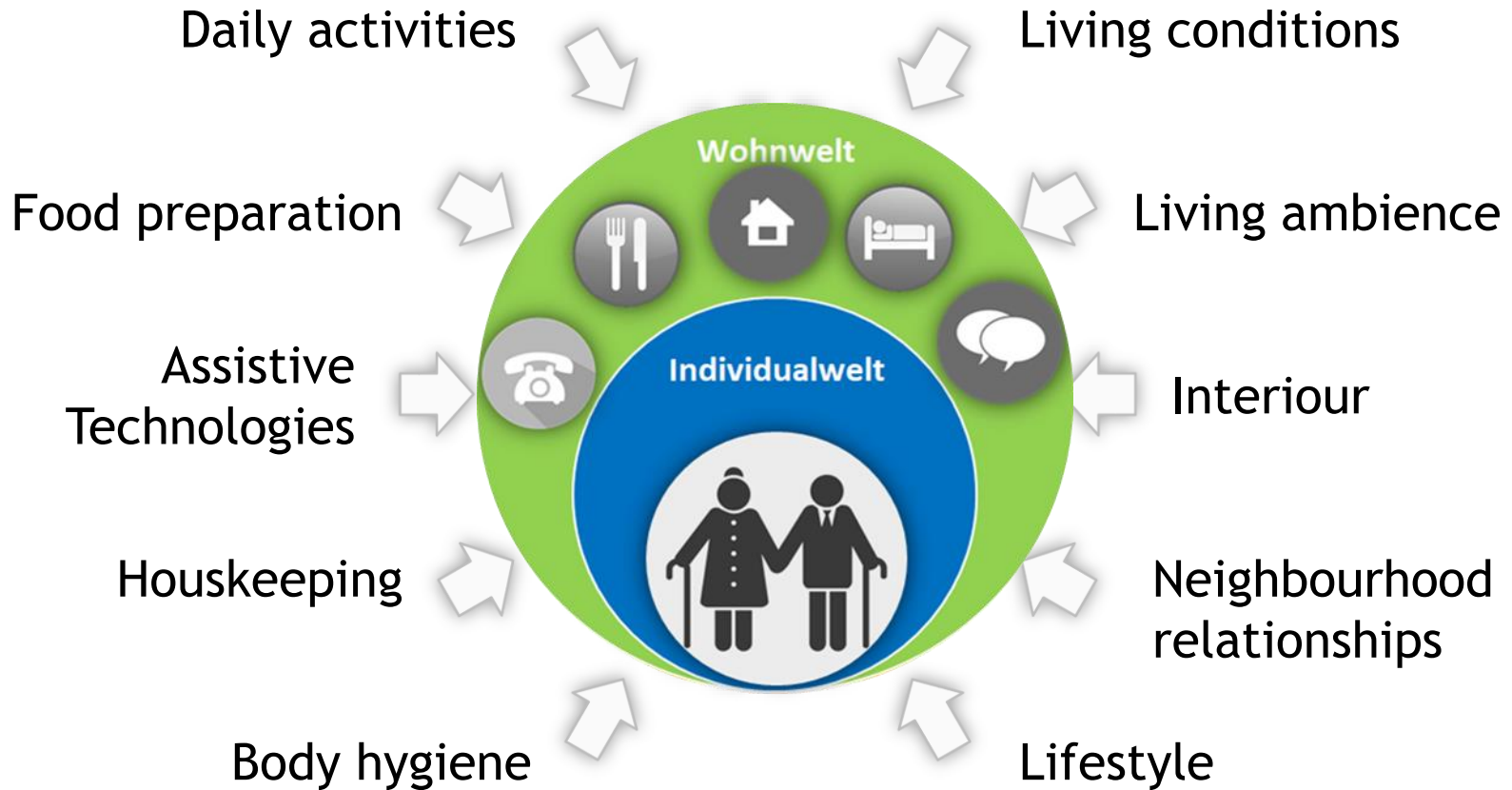
Level of „AAL-Welten-Modell“

Individual Area



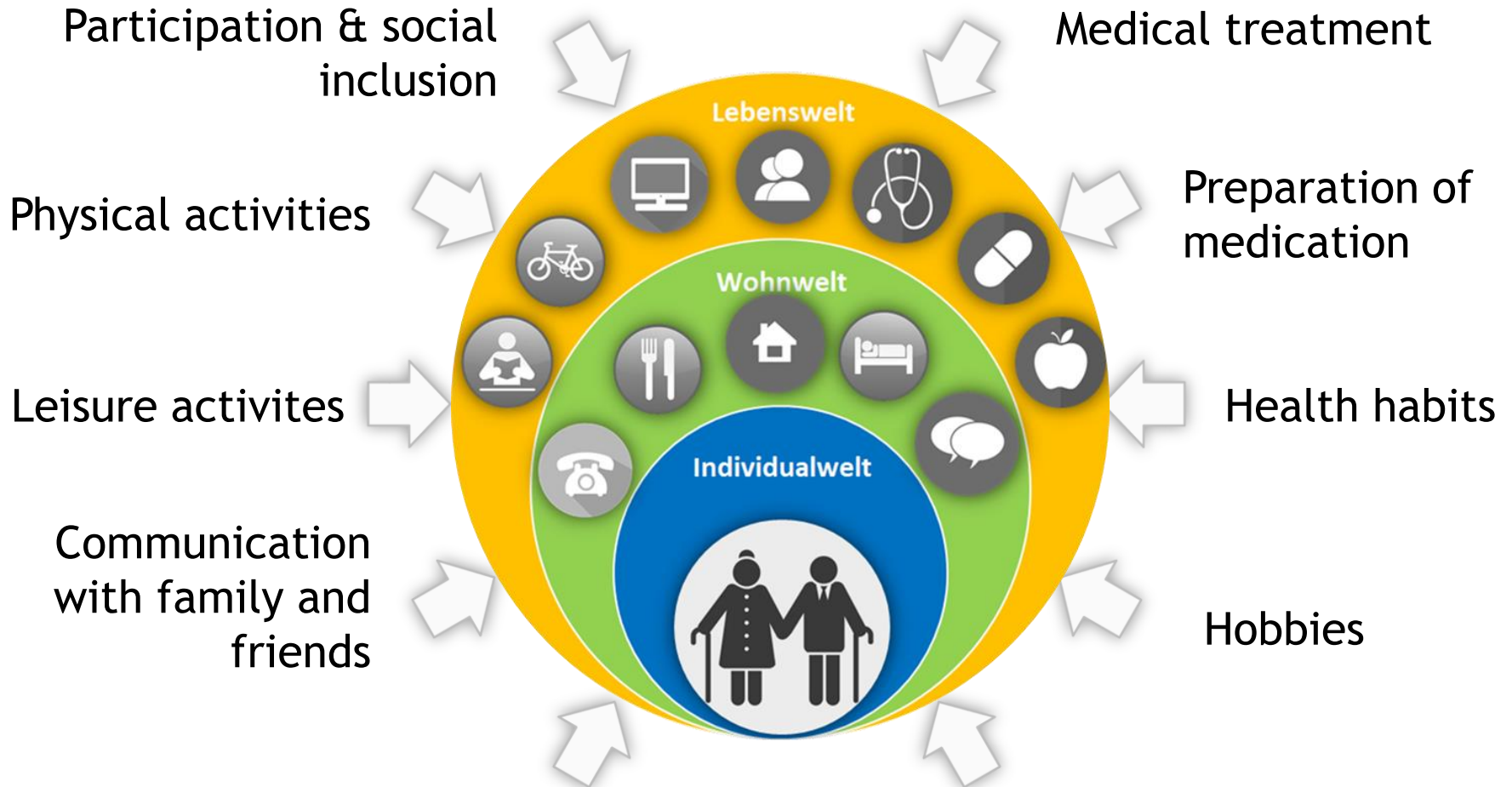
Level of „AAL-Welten-Modell“

Living Area



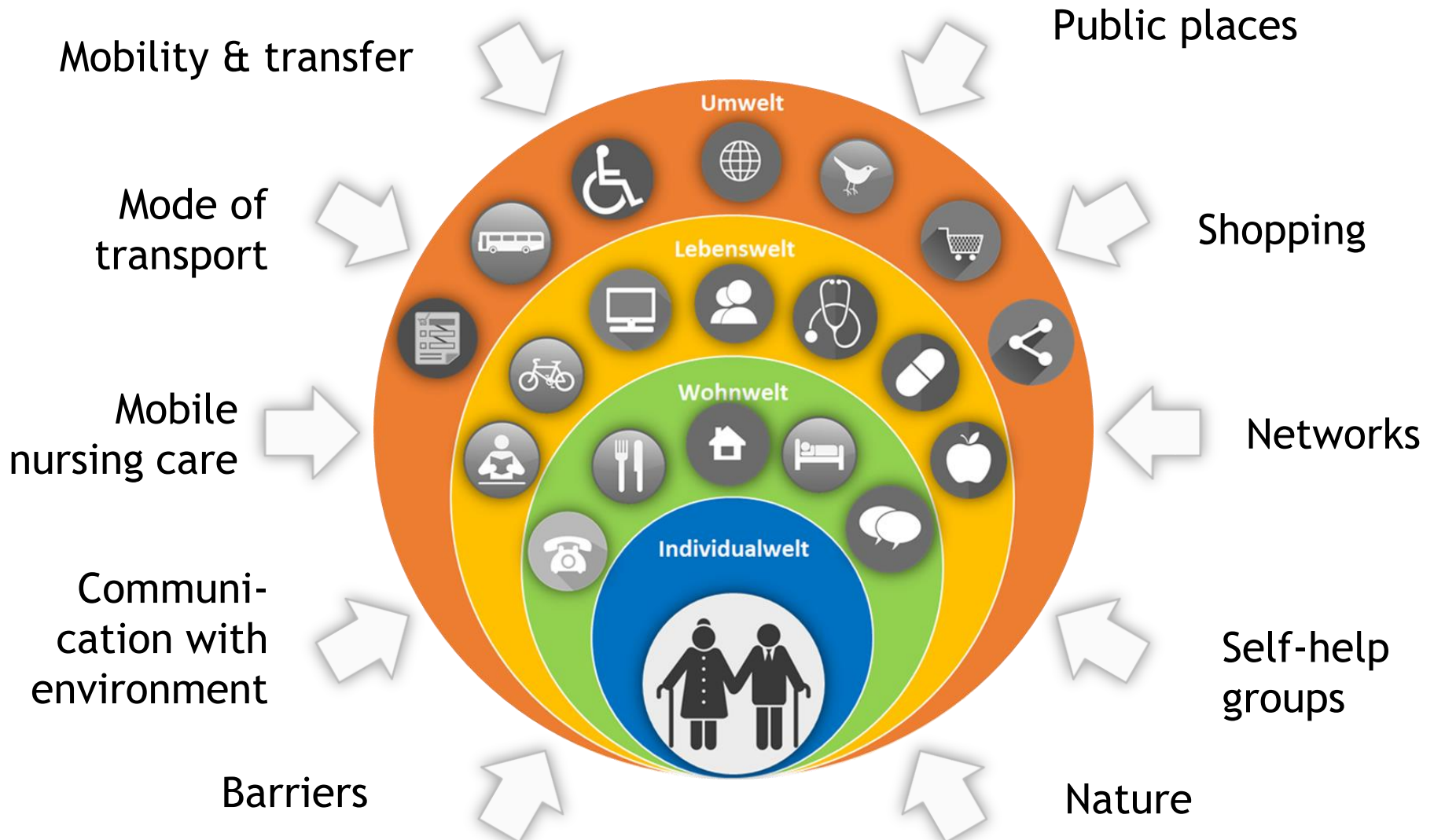
Level of „AAL-Welten-Modell“

Life Area



Level of „AAL-Welten-Modell“

Environment



Pre-Assessment of needs

- AAL-Welten Modell was basis for the needs assessment
- 4 categories & 99 items
- Conducted as semi-quantitative interviews



1. Einleitung

Sehr geehrte Bewohner! Sehr geehrter Bewohner!

Moderne Technologien können dazu beitragen Ihren Alltag sicherer und angenehmer zu gestalten. Technische Hilfsmittel können Sie bei den Aufgaben des täglichen Lebens unterstützen. Die Fachhochschule Burgenland (FH) in Pöchlarn führt diese Befragung durch im Rahmen von zwei Forschungsprojekten COOP-HEALTHCARE (Kooperationsprogramm INTERREG SI-AT) und digitalLIFEAGE (Kooperationsprogramm INTERREG Central Europe).

Durch die Teilnahme an der mündlichen Befragung haben Sie die Möglichkeit, Ihre Meinung zu äußern, Ihre Bedürfnisse und Bedürfnisse zum Ausdruck zu bringen und Verbesserungsvorschläge sowie neue Ideen aufzuzeigen. Die Befragung zielt darauf ab individuelle Lösungen für ältere Menschen mit Unterstützungsbedarf zu erarbeiten, das heißt mit Ihrer Teilnahme tragen Sie maßgeblich zur Konzeptentwicklung für Brevues Wohnen bei.

Die Befragung basiert auf dem „AAL-Welten Modell“, dieses Modell stellt den individuellen Mensch und seine Bedürfnisse und Bedürfnisse in den Mittelpunkt. Das Modell ist in vier Bereiche gegliedert und betrachtet verschiedene Aspekte der Individualität: Wohnwelt und Umwelt, Der Ausgangspunkt des Modells ist die Individualität, dieser Bereich umfasst den subjektiven Gesundheitszustand, Bewusstseinsaspekte im Alltag sowie Verhaltensauffälligkeiten. Die Wohnwelt betrachtet relevante Aspekte im Zusammenhang mit den Aktivitäten des täglichen Lebens, sowie die Einschätzung des Unterstützungsbedarfes aufgrund von Beeinträchtigungen. Umfasst werden Wohnhabitus und mögliche Anpassungen im Wohnumfeld. Der Bereich Umwelt umfasst verschiedene Aspekte der Partizipation, insbesondere Barrieren und Erreichbarkeit. Weiter umfasst der Bereich die Kommunikation und Abstimmung der relevanten Umwelten, beispielsweise die Koordination der mobilen Gesundheitsdienste, Seniorenangebote, Selbsthilfegruppen, Ärzten und Apotheken.

Wir bitten Sie daher herzlich, sich etwas Zeit für die mündliche Befragung zu nehmen. Ihre Antworten werden selbstverständlich anonym und vertraulich behandelt.

Die Daten werden im Zuge einer wissenschaftlichen Studie in anonymisierter Form erhoben, gespeichert und verarbeitet.

2. Soziodemographische Daten

2.1 Wie alt sind Sie? (in Jahren) _____

2.2 Ihr Geschlecht ist? ☐ Weiblich ☐ Männlich

2.3 Welchem Familienstand haben Sie? ☐ Ledig ☐ Verheiratet

2.4 Wohnen Sie alleine im Haushalt? ☐ Ja ☐ Nein

2.5 Welchen höchsten Bildungsabschluss haben Sie? ☐ Keinen Schulabschluss ☐ Volksschulabschluss ☐ Geschiedener

☐ Mittlere Schulabschluss ☐ Höhere Schulabschluss ☐ Matura

☐ Studium / Universitätsabschluss ☐ Lehre ☐ Sonstiges

Results of needs Pre-Assessment

Socio-demographic data of population

Sample	n= 11 residents of nursing home St. Vinzenz, Pinkafeld (AT)
Gender	54% female, 46% male
Mean age	84,2 years
Family status	64% widowed, 18% divorced, 9% single, 9% married
Educational level	73% intermediate-level 27% higher-level
Income	27% very good financial situation 64% good financial situation 9% limited financial situation

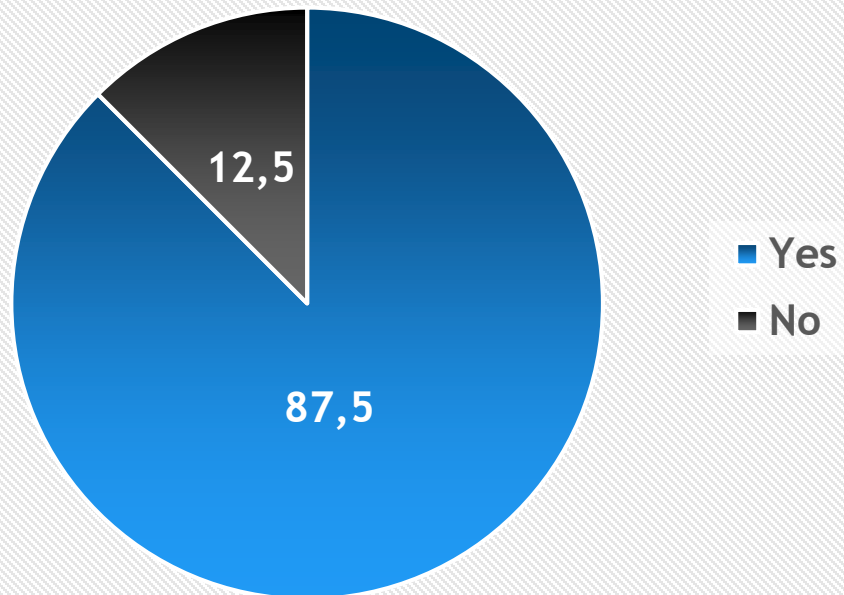


Results of needs Pre-Assessment

Individual Area

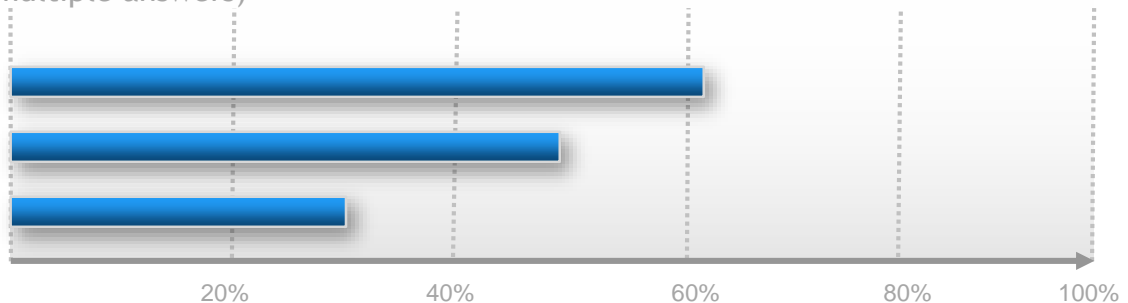


Do you have any health restrictions or
chronical diseases?



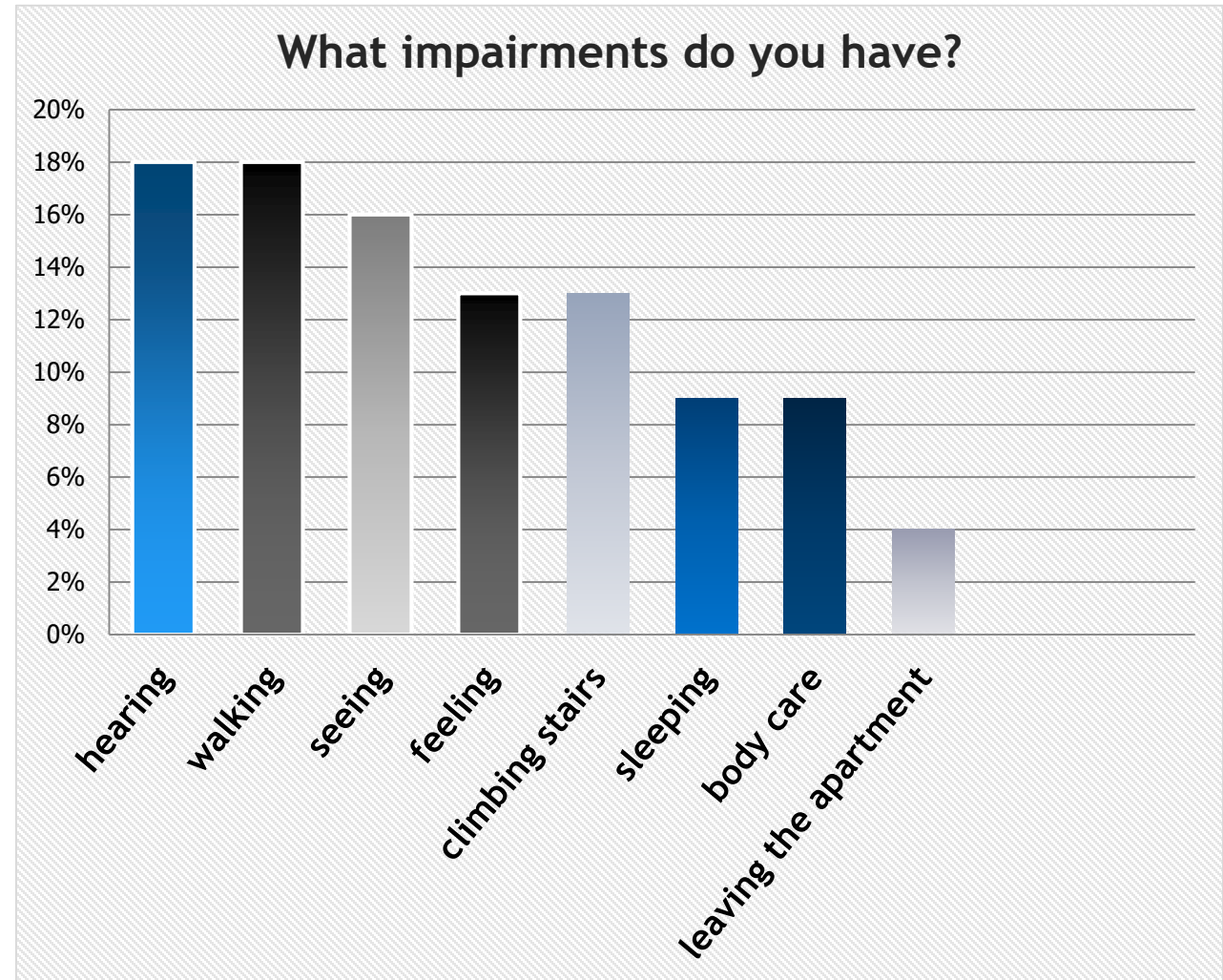
TOP 3: chronical diseases: (multiple answers)

- 1 arthrosis
- 2 hypertension
- 3 chronic low back pain



Results of needs Pre-Assessment

Individual Area



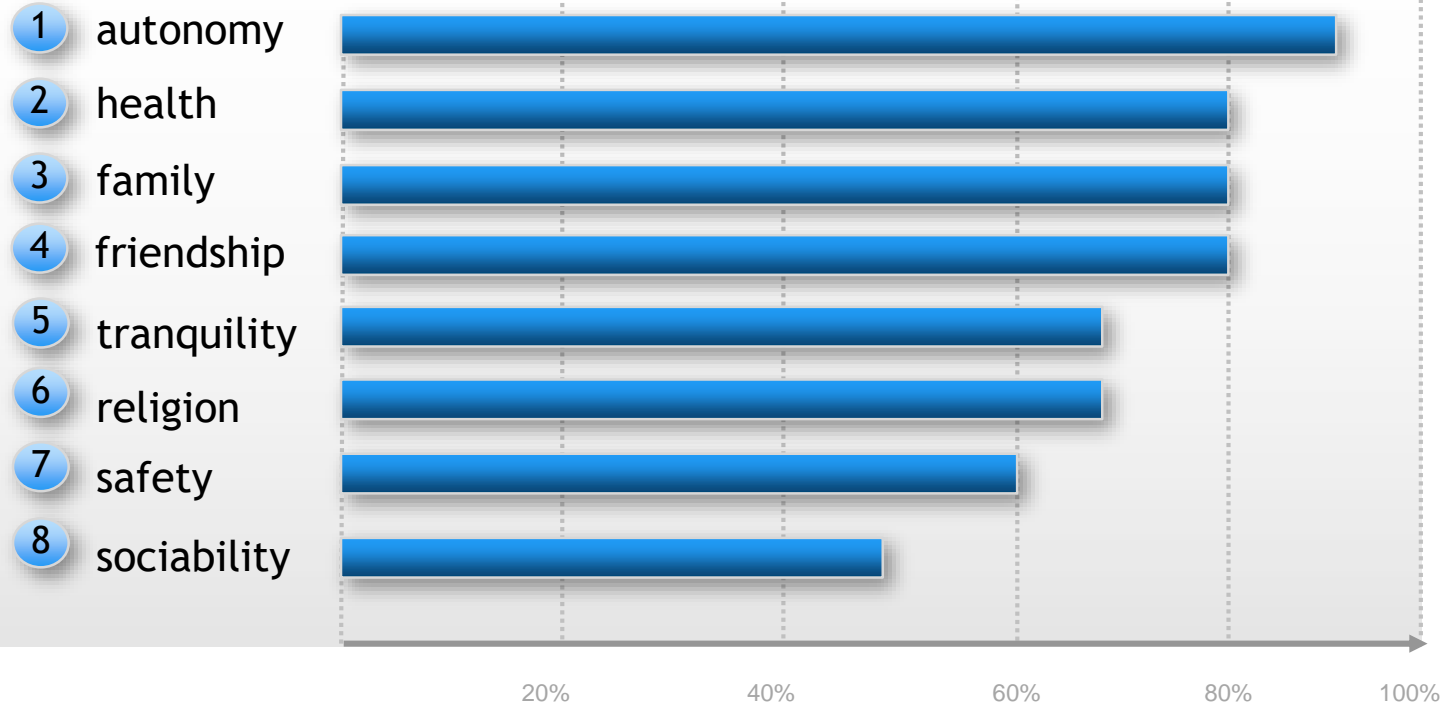
Results of needs Pre-Assessment

Individual Area



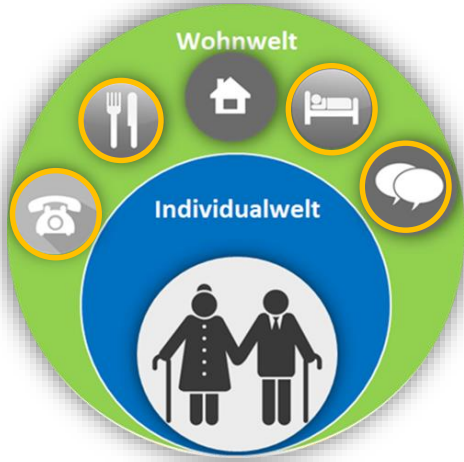
What values are important for you?

TOP 8 (multiple answers)

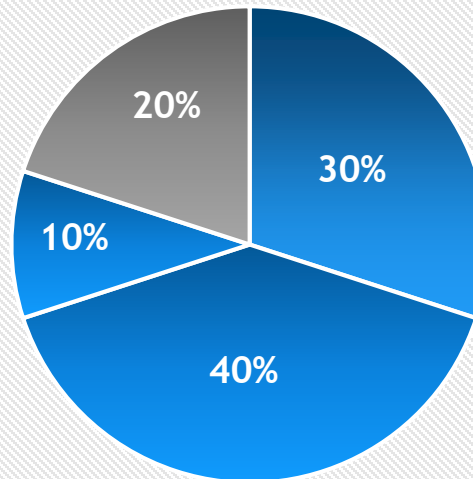


Results of needs Pre-Assessment

Living Area



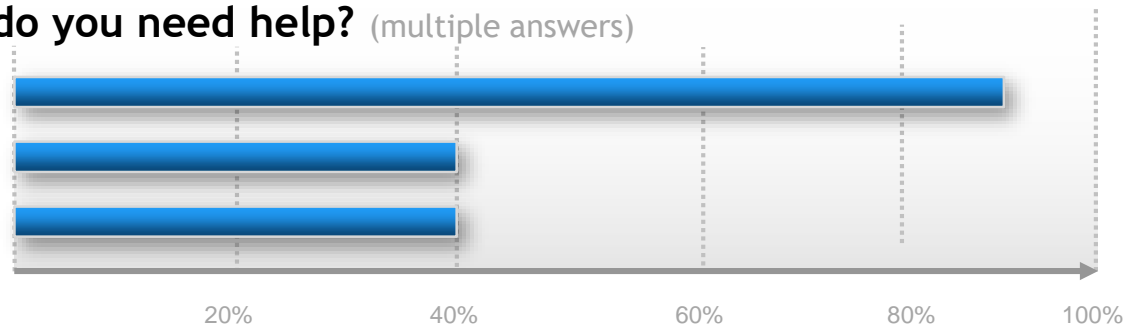
How much are you impaired in daily activities due to health problems?



- strongly impaired
- impaired
- little impaired
- not impaired

TOP 3: In which activities do you need help? (multiple answers)

- 1 household
- 2 meal preparation
- 3 shopping



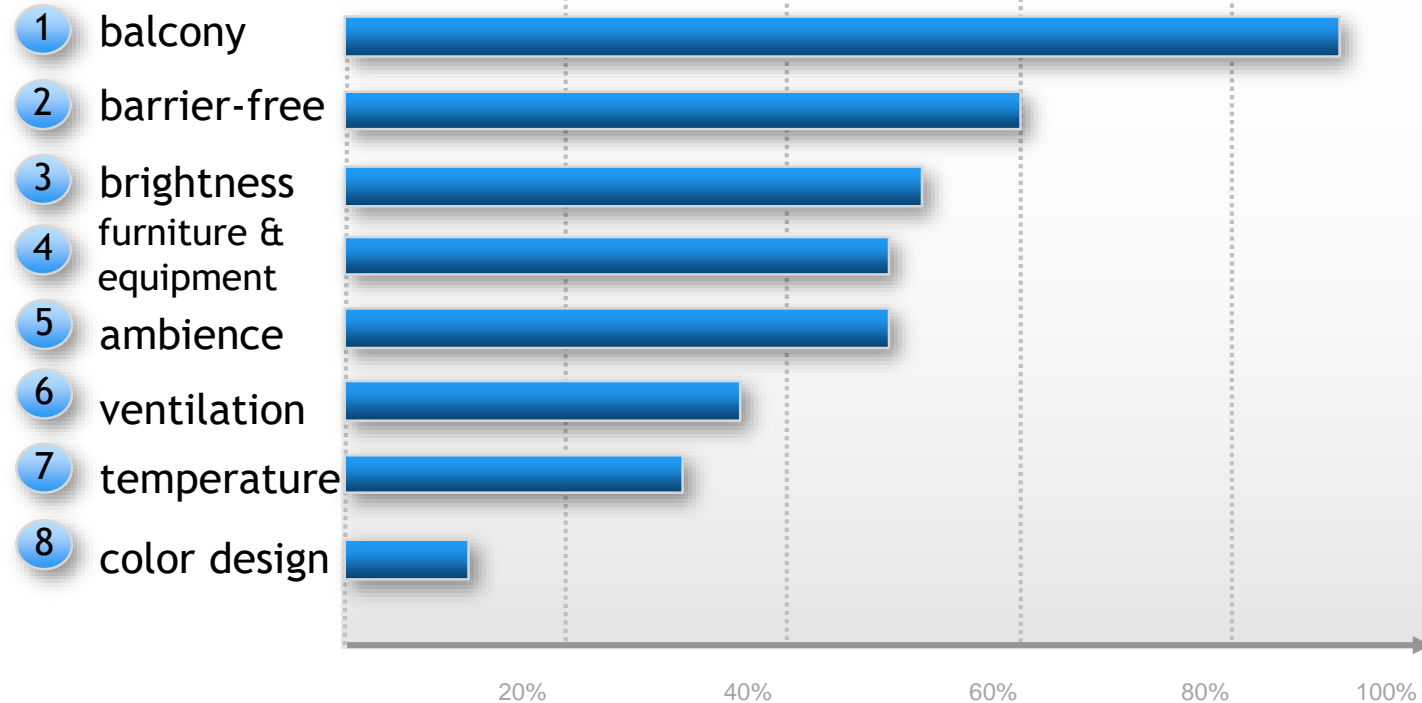
Results of needs Pre-Assessment

Living Area



What is important in your apartment?

TOP 8 (multiple answers)



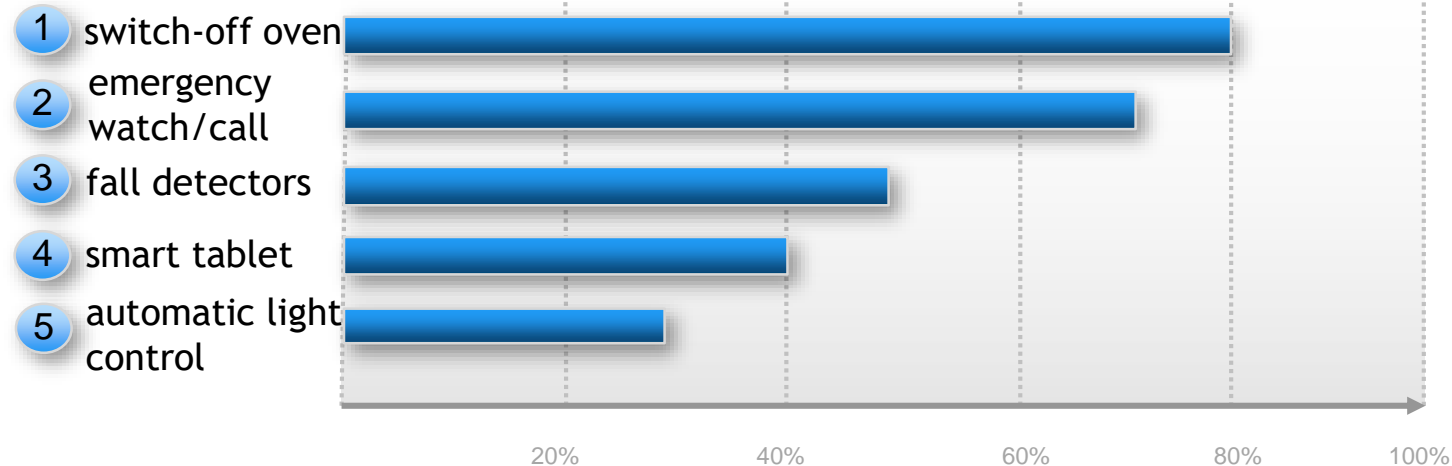
Results of needs Pre-Assessment

Living Area



Which technical applications would make your everyday life easier?

TOP 5 (multiple answers)



TOP 3: What are the barriers?

- lack of training and technical advice
- lack of digital skills
- limited financial situation - no big investments

Results of needs Pre-Assessment

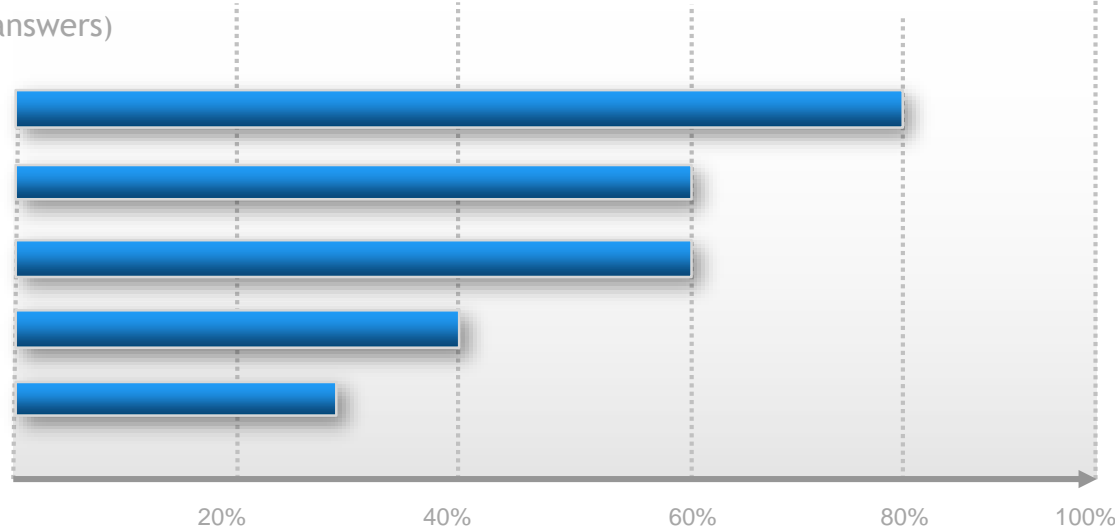
Living Area



How do you spend your spare time?

TOP 5 (multiple answers)

- 1 watch TV
- 2 go for a walk
- 3 books & newspapers
- 4 family & friends
- 5 shopping



TOP 3:

What are your preferred communication channels?

- mobile phones
- direct talks
- messenger services (WhatsApp, Skype)

TOP 3:

What are the barriers for taking part in social events?

- lack of interest
- lack of relationships
- lack of information

Results of needs Pre-Assessment

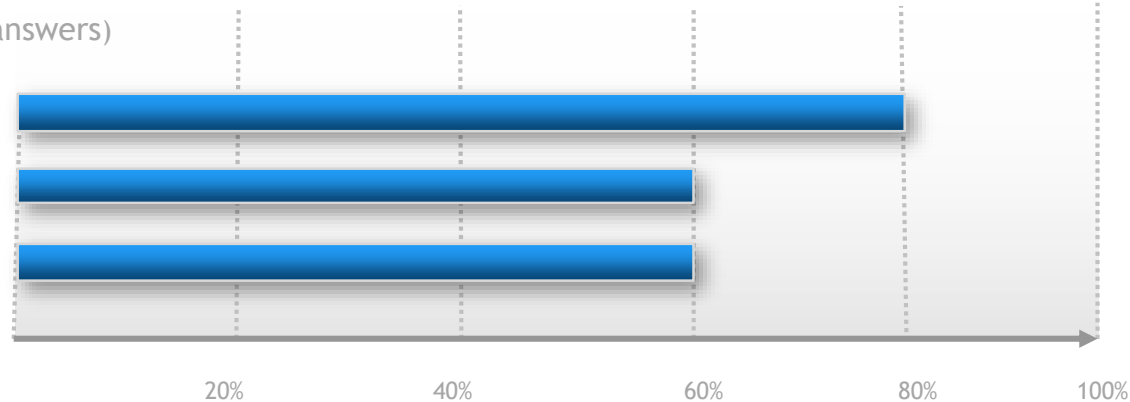
Environment



Which places do you visit regularly?

TOP 3 (multiple answers)

- 1 grocery stores
- 2 nature / parks
- 3 pharmacies & GP's



TOP 4: Which barriers are on the way or at the place?

- stairs
- lack of sitting facilities
- lack of lighting
- lack of rest rooms

Results of needs Pre-Assessment

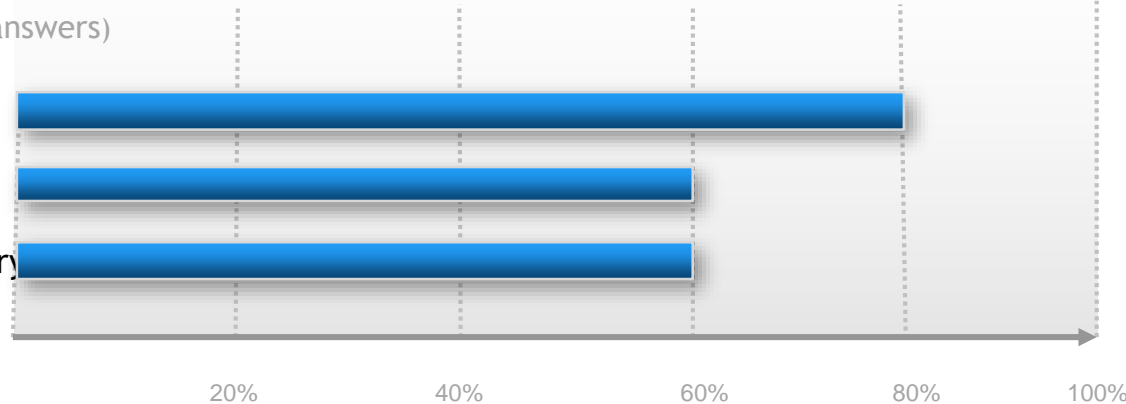
Environment



Which mobile services would be interesting for you?

TOP 3 (multiple answers)

- 1 transport services
- 2 food delivery services
- 3 medicine delivery services



TOP 5: What additional services or offers would be interesting?

- grocery delivery services
- joint exercises, training sessions and sport facilities
- concerts, theater, culture events
- emergency button to activate the emergency chain
- tablets with senior friendly-applications to get in touch with environment



Needs Assessment

- Shift of senior's needs because of several determinants
- AAL-solutions offer numerous advantages, BUT technologies have to consider the needs and resources of the elderly
- Due to diverse life concepts we identified a broad range of needs



AAL-Welten Modell

- Concepts includes different areas and aspects of the elderly population
- Good transferability because of usage of different areas
- Ensures hands-on AAL interventions based on the needs of the elderly
- Human being is taking center stage

Questions and Discussion?



- What questions or points would you like to share from your experiences conducting a needs assessment among elderly?
- Which additional approaches / concepts to assess health and social care needs do you know? Have you already used one of them?
- Which instruments / methods do you think are adequate to gather and understand the needs and individualities of older people?
- Where do you see the strengths and weaknesses of our model?